



# Multi-Form™ Side Rails

(Galvanized Steel Side Rails)

Durable, Quick and Precise

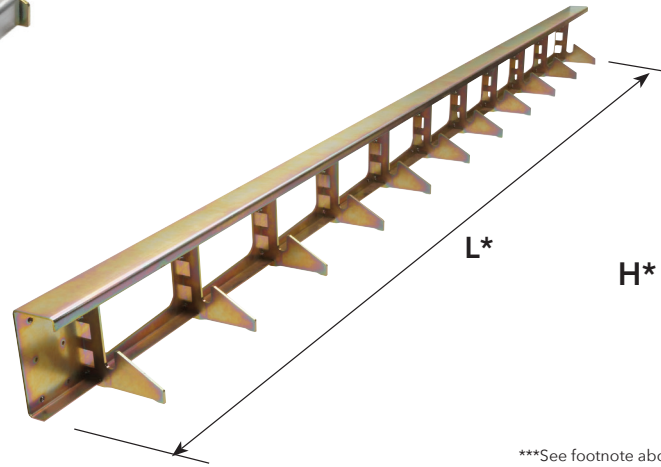
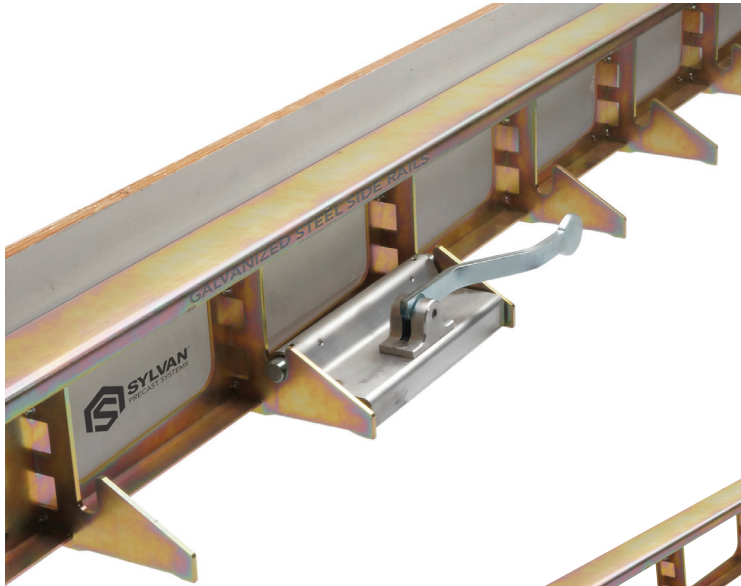
Sylvan Precast Systems

Tel. (800) 842-1990

or (503) 639-9000

email: info@sylvan-products.com

www.sylvan-products.com/precast



## Features & Benefits

- Saves time and materials—fast return on investment.
- Quick adjustments with ease and precision.
- Mag-Fly Power Magnets fit easily in place for fast, precise forming. Easy to handle without a crane.

\*\*\*See footnote about recommended faceplate heights (at bottom)

## Product Description:

Made of durable galvanized steel, Multi-Form™ rails are part of an innovative precast forming system. They are designed to work with Mag-Fly™ Power Magnets on steel beds, and on adapter sets on wood beds, for fast, easy and exact forming. Offered exclusively across North America by Sylvan!

Height (H) inches (mm)*	Length (L) inches (mm)*	Breadth (B) inches (mm)*	Weight (lbs)**
4" (98 mm)	119" (9' 11") (3025 mm)	5.9" (150 mm)	29 lbs
6" (148 mm)			40 lbs
8" (198 mm)			43 lbs
10" (248 mm)		8" (200 mm)	52 lbs
12" (298 mm)			56 lbs
14" (348 mm)			66 lbs
16" (398 mm)		10" (250 mm)	73 lbs
18" (448 mm)			78 lbs
20" (498 mm)			85 lbs

\* Sizes are listed in U.S. customary units (Imperial) and are rounded to the nearest nominal inch. Additional custom sizes available as production schedules allow.

\*\* Weights are rounded up to the nearest pound (lb.), and do not include the extra weight of the plywood or facing material.

\*\*\* Overlaid Plywood or Metal faceplates can generally be used up to 4-to-6 inches above the top of the rail height, depending on the thickness, species and grade of overlay plywood or the type/gauge of metal. 10' Overlay Plywood is available from Sylvan to make 10' sections, and 5 magnets can often be used for two 10' rail sections. (20')