

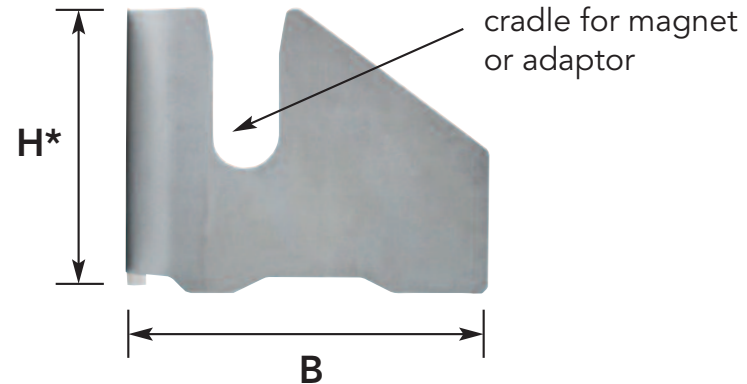
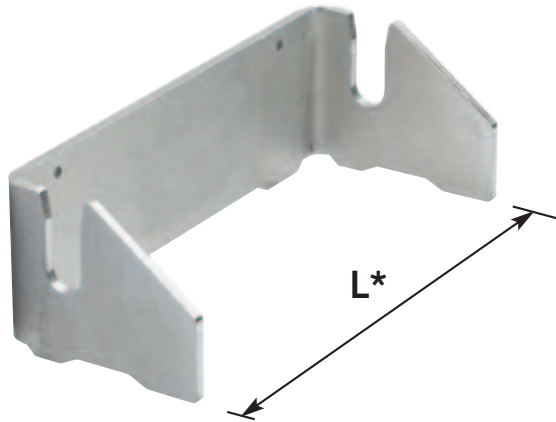


SYLVAN
PRECAST SYSTEMS

MULTI-FORM™ Galvanized Steel Forming BRACKETS Chart of Standard Heights***

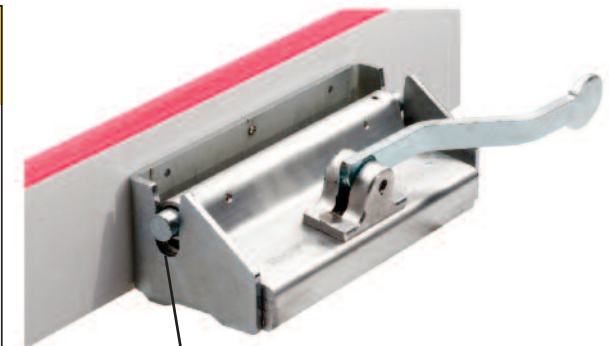
(Larger sizes also available upon request)

MULTI-FORM™ BRACKETS (Galv. Steel)***



*** See footnote about recommended faceplate heights (at bottom)

Height (H) inches (mm)*	Breadth (B) inches (mm)*	Length inches (mm)*	Weight (lbs)**	Material & Coating Type
4" (90 mm)	4.3" (110 mm)	11" (284mm)	4 lbs	S235JR Steel
6" (148 mm)	4.5" (116 mm)		6 lbs	
8" (190 mm)			8 lbs	zinc- galvanized
10" (248 mm)			10 lbs	
12" (290 mm)	8" (206 mm)		13 lbs	
16" (390 mm)	10" (256 mm)		17 lbs	



Multi-Form™ BRACKETS in use in tight-space bracing, or for block-outs

* Sizes are listed in U.S. customary units (Imperial) and are rounded to the nearest nominal inch. Additional custom sizes available as production schedules allow.

** Weights are rounded up to the nearest pound (lb.), and do not include the extra weight of crating and packaging material.

*** Overlaid Plywood or Metal faceplates can generally be used up to 4-to-6 inches above the top of the rail height, depending on the thickness, species and grade of overlay plywood or the type/gauge of metal.