

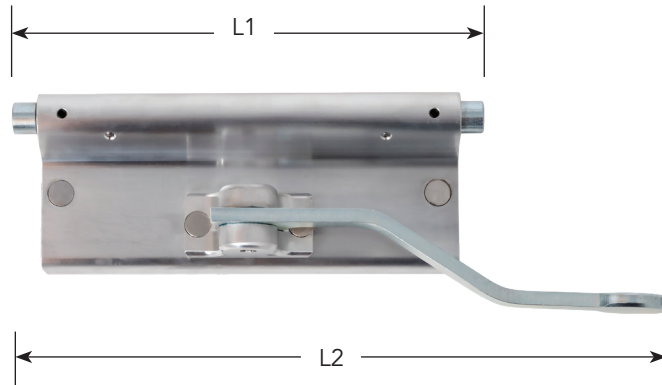


# Mag-Fly™ Power Magnets

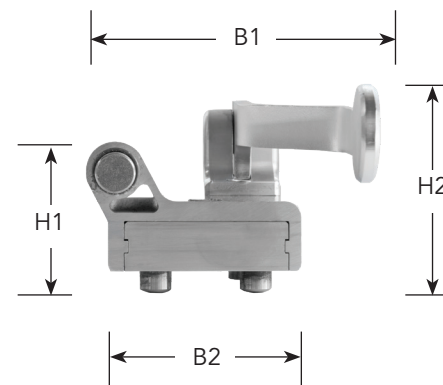
## Technical Data Sheet



Top View Measurements



Side View Measurements



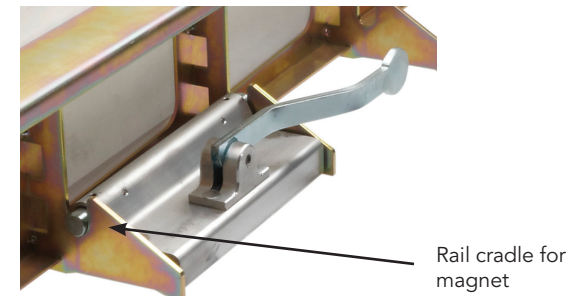
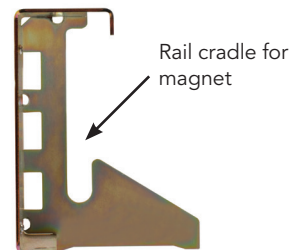
| Part Number           | Description           | Pounds Force*       | Weight (ea.)       | Length 1 (L1)       | Length 2 (L2)       | Breadth 1 (B1)     | Breadth 2 (B2)    | Height 1 (H1) | Height 2 (H2)  |
|-----------------------|-----------------------|---------------------|--------------------|---------------------|---------------------|--------------------|-------------------|---------------|----------------|
| <b>BT.MAG.8001067</b> | Mag-Fly™ Power Magnet | 4,945 lbs.<br>(22N) | 11 lbs<br>(5.4 kg) | 10-1/4"<br>(260 mm) | 15-1/8"<br>(385 mm) | 5-1/8"<br>(130 mm) | 3-3/4"<br>(96 mm) | 3"<br>(76 mm) | 4"<br>(100 mm) |

\* Exceeding the permissible maximum temperature of 175° F will result in permanent loss of adhesive force for the standard Mag-Fly™ Magnet. A special heat-resistant design can be used up to the temperature of 248° F (120° C), and is available upon request at a higher cost.

### Mag-Fly™ Magnet Placement

| Rail Height  | Magnets per 10' Rail section | Maximum Distance between Magnets (ft) |
|--------------|------------------------------|---------------------------------------|
| 3-1/2" - 14" | 3                            | 3 feet                                |
| 16" - 24"    | 4                            | 2-1/2 feet                            |
| 26" - 32"    | 5                            | 2 feet                                |
| 34" and over | 6 or more*                   | 1-1/2 feet or less*                   |

\* Depending on customer heights and usage, etc. Contact us. Our sales team will provide specific recommendations for your project.





## Mag-Fly™ Power Magnets

### Features and Benefits



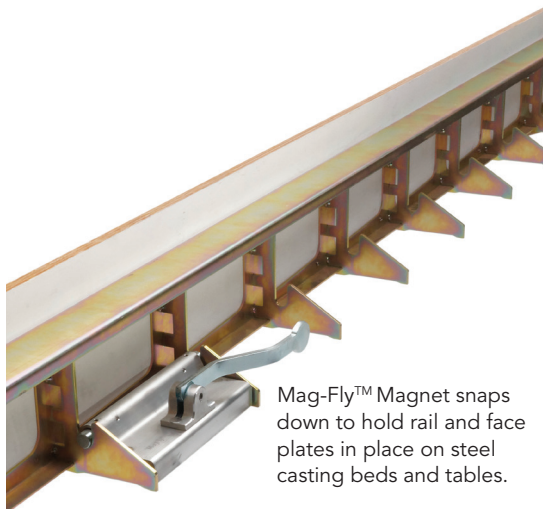
Sylvan Precast Systems  
Tel. (800) 842-1990  
or (503) 639-9000  
email: [info@sylvan-products.com](mailto:info@sylvan-products.com)  
[www.sylvan-products.com/concrete](http://www.sylvan-products.com/concrete)

#### Lightweight, yet most powerful magnet technology:

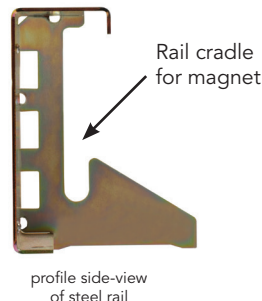
Mag-Fly™ Power Magnets are designed to work with the Fly-Frame™ and Multi-Form™ Rail and Bracket system for incredibly fast and precise precast forming. This advanced, German-engineered precast framing system has been used extensively in Europe since 2005, and now has caught on quickly in the U.S. since 2014 for its ease, speed and precision.

#### Proven Durability:

Featuring a durable aluminum housing, the Mag-Fly™ Power Magnet weighs only 11 lbs., but it offers over 4,500 lbs. of resistance force. That means once the magnets are adjusted for positioning, they hold frames and faceplates in place securely and accurately. The patented foot-spring system makes it a snap to accurately secure the magnet with just light hand pressure.

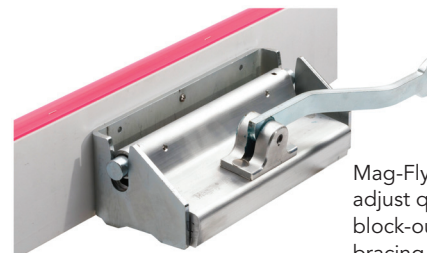


Mag-Fly™ Magnet snaps down to hold rail and face plates in place on steel casting beds and tables.

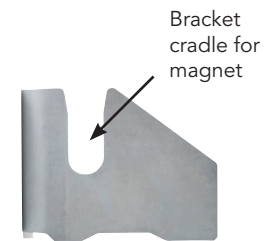


Rail cradle for magnet

profile side-view of steel rail



Mag-Fly™ Magnets also adjust quickly for custom block-outs, brackets and bracing in small areas



Bracket cradle for magnet

profile side-view of steel bracket

#### Features and Benefits:

- Part of a modern, convenient and proven precast forming system
- Precise positioning, re-positioning and locking into place is quick and easy with the rail or bracket cradles
- Saves time and money for quick change-overs and even faster return on investment
- No hammering needed to adjust magnet position
- Lightweight aluminum housing keeps magnets from sticking to each other when handling
- Plastic cover sheets help shield magnet during use
- Patented foot-spring system with built-in release lever (no searching for tools — saves more time and labor costs during change-overs than other systems)
- Holds powerfully yet releases easily (release force: < 37 pounds of lifting resistance)
- Best magnetic force-to-weight ratio of its class worldwide: 4,945 lbs. to 11 lbs.
- Good ergonomic design and low weight make it easy to carry by hand, position, and quickly snap into place on casting beds and tables
- Preserves investments in steel casting tables by eliminating need for drilling, plugging and making expensive repairs to table